

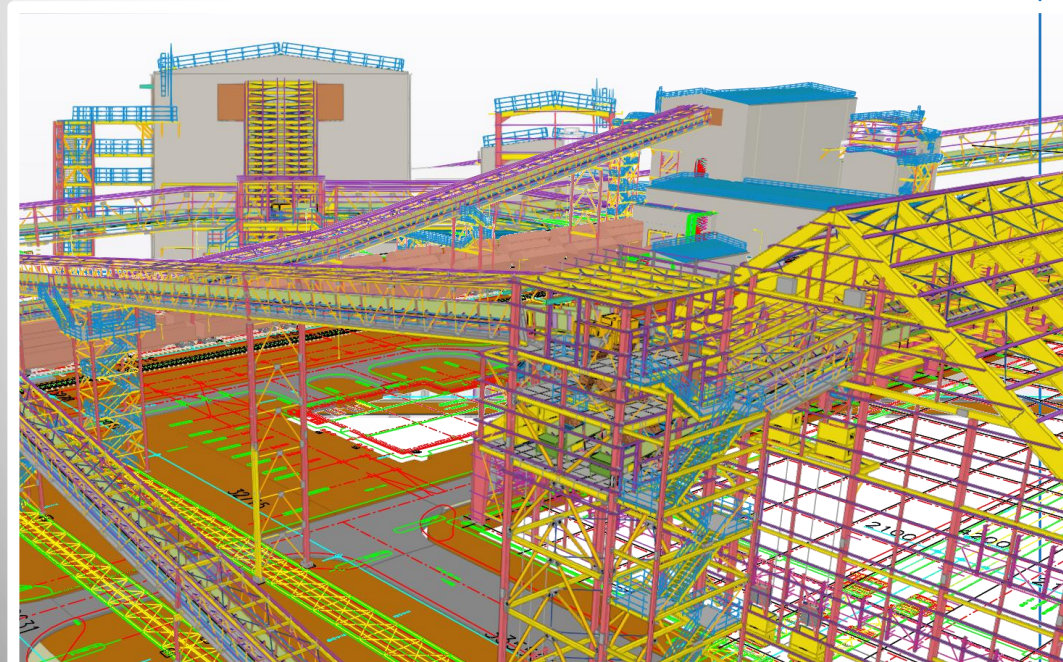
LMSTEEL Consulting sagl è una società di Ingegneria Indipendente attiva dal 2013 che svolge attività di consulenza e sviluppo progettuale nel settore delle Costruzioni Civili e Industriali fornendo servizi multidisciplinari con particolare focus nella progettazione Esecutiva e Costruttiva delle strutture metalliche. Collaboriamo con EPC e MetalCostruttori ai quali forniamo servizi di:

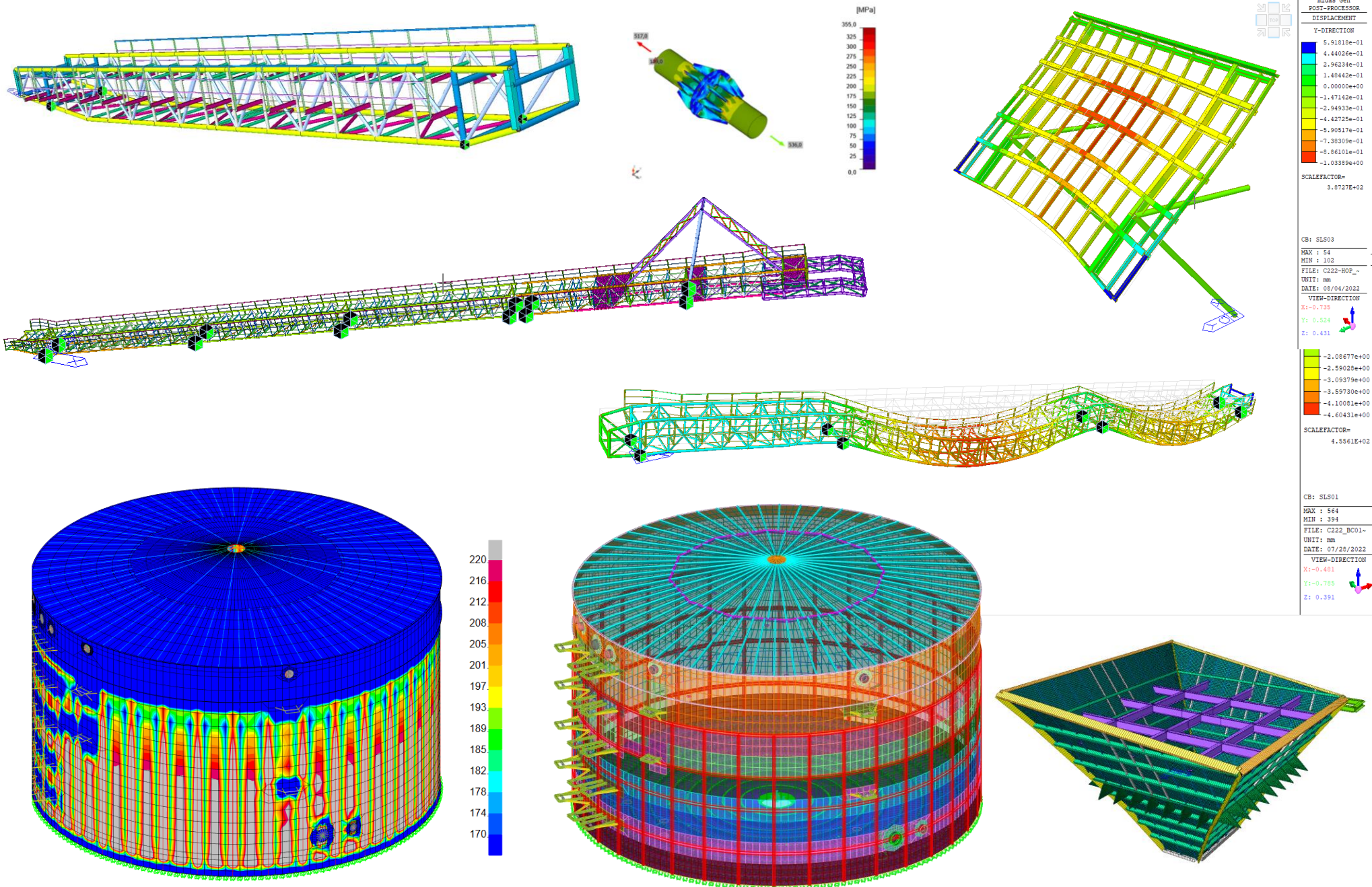
- **PROGETTAZIONE ESECUTIVA INTEGRATA**
- **CALCOLO STRUTTURALE (Basic & Detail Design)**
- **BIM MODELLING LOD 450**
- **PROJECT & CONSTRUCTION MANAGEMENT**
- **DESIGN FOR MANUFACTURING:**
- **CONSULENZA DEDICATA**

Forniamo servizi in sistema di qualità ISO 9001:2015 in processo BIM (Tekla Structures, Revit,) e siamo in grado di coordinare un team specializzato per progetti lunghi e complessi.

E-mail
Phone

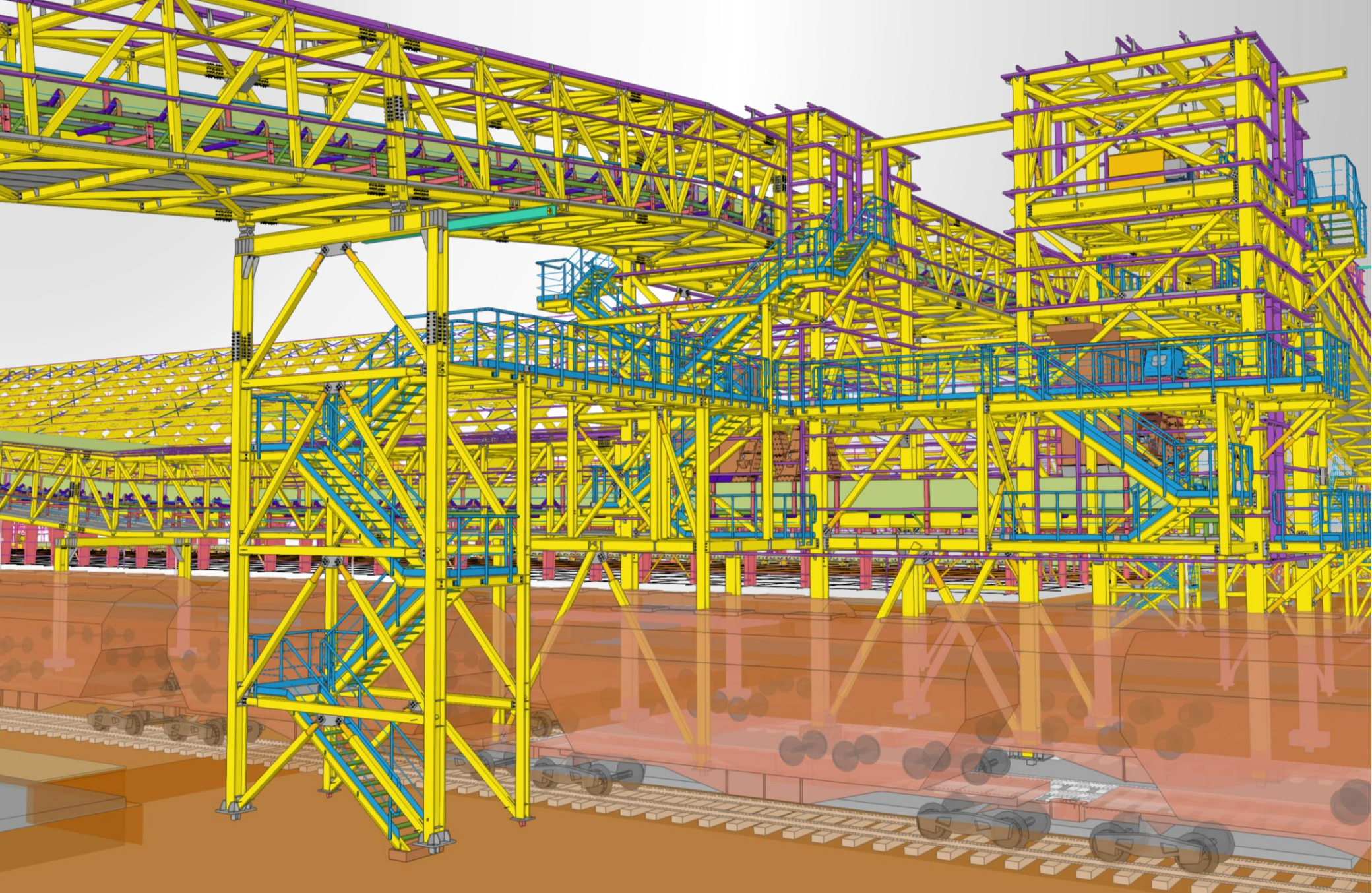
info@lmsteel.ch
+41 (0)91 630 0531

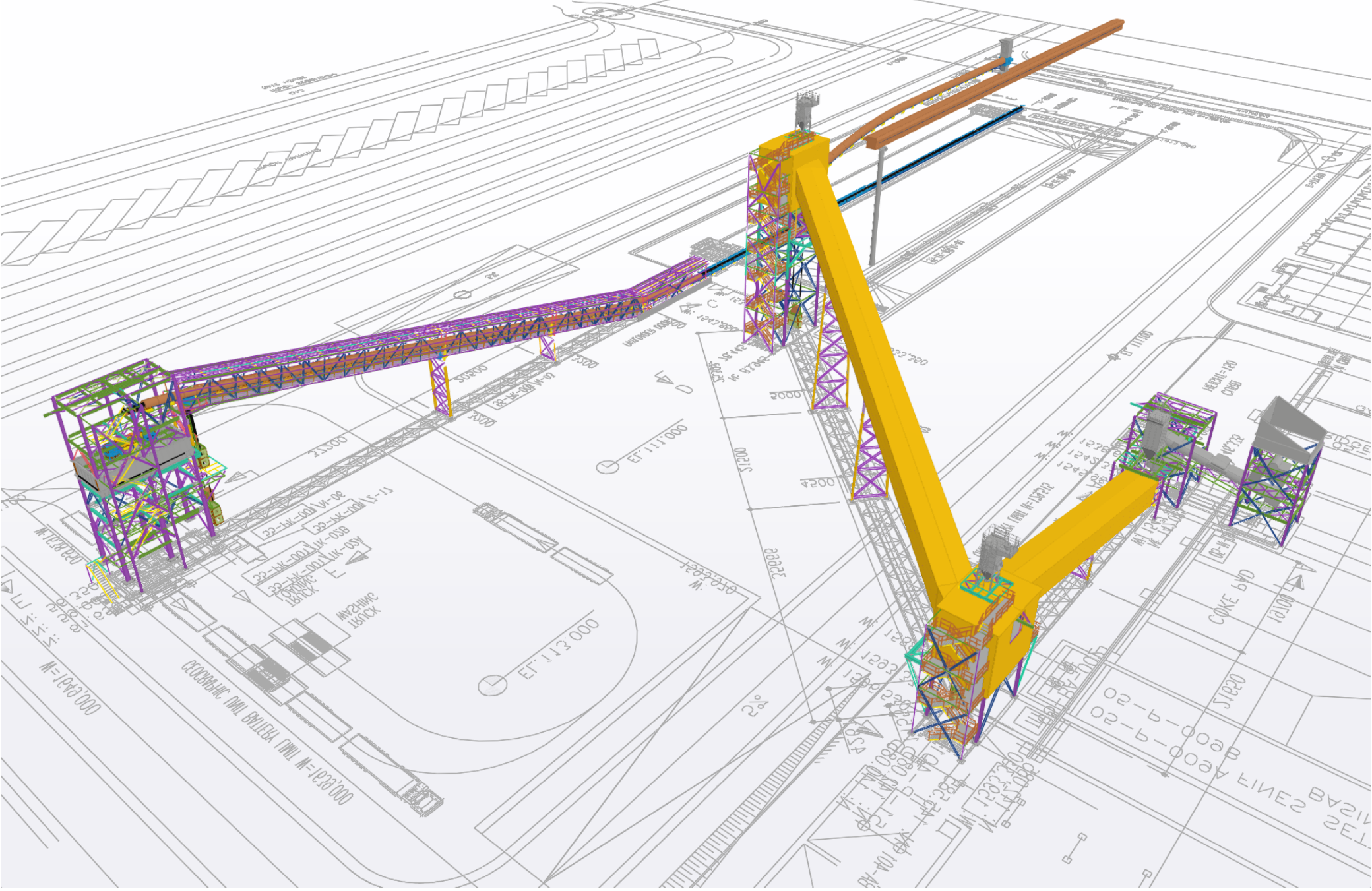




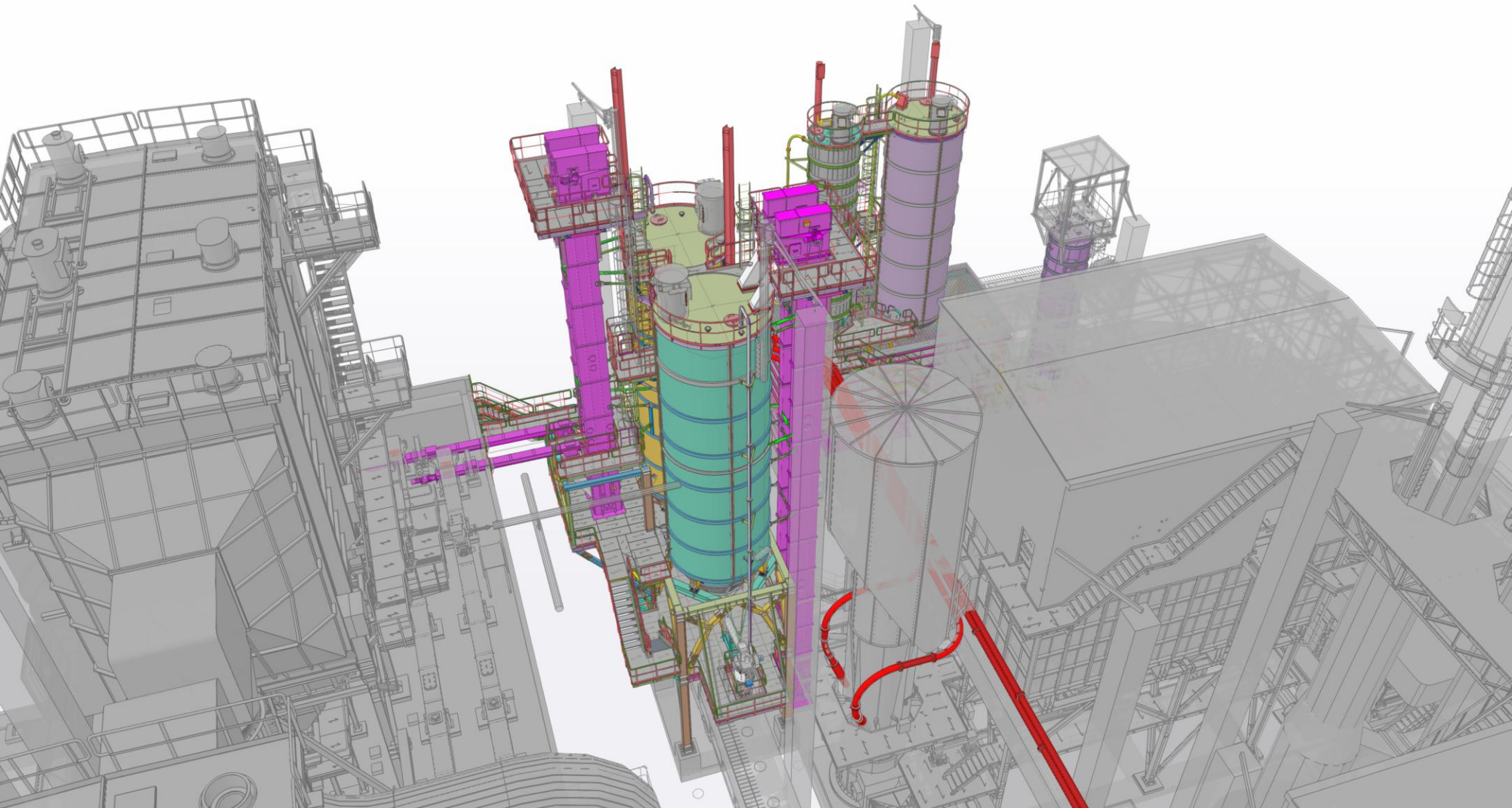
midas Gen
 POST-PROCESSOR
 DISPLACEMENT
 Y-DIRECTION
 5.91018e-01
 4.44026e-01
 2.96234e-01
 1.48442e-01
 0.00000e+00
 -1.47142e-01
 -2.94933e-01
 -4.42725e-01
 -5.90517e-01
 -7.38309e-01
 -8.86101e-01
 -1.03359e+00
 SCALEFACTOR=
 3.8727E+02
 CB: SLS03
 MAX : 54
 MIN : 102
 FILE: C222-NOP_
 UNIT: mm
 DATE: 08/04/2022
 VIEW-DIRECTION
 X: -0.735
 Y: 0.524
 Z: 0.431
 -2.08677e+00
 -2.59020e+00
 -3.09379e+00
 -3.59730e+00
 -4.10081e+00
 -4.60431e+00
 SCALEFACTOR=
 4.5561E+02
 CB: SLS01
 MAX : 564
 MIN : 394
 FILE: C222_BC01-
 UNIT: mm
 DATE: 07/28/2022
 VIEW-DIRECTION
 X: -0.481
 Y: -0.785
 Z: 0.391

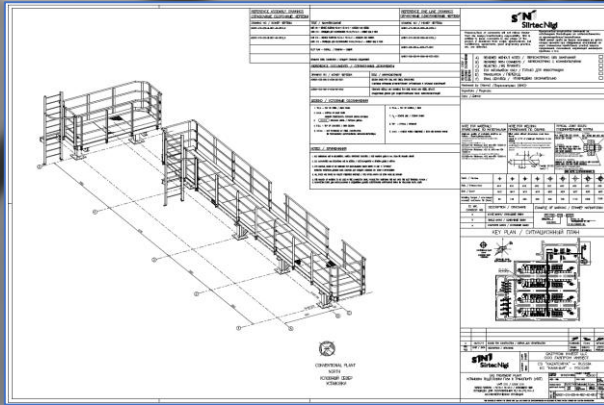
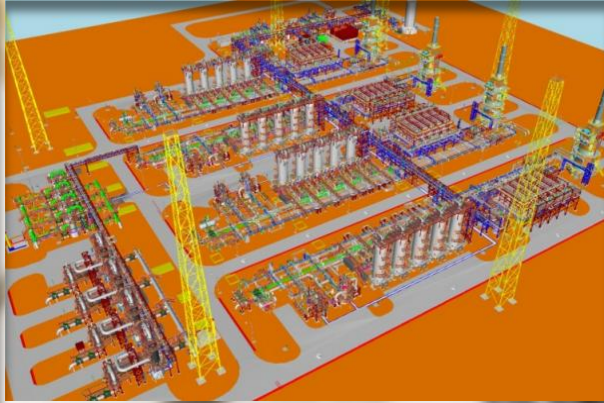
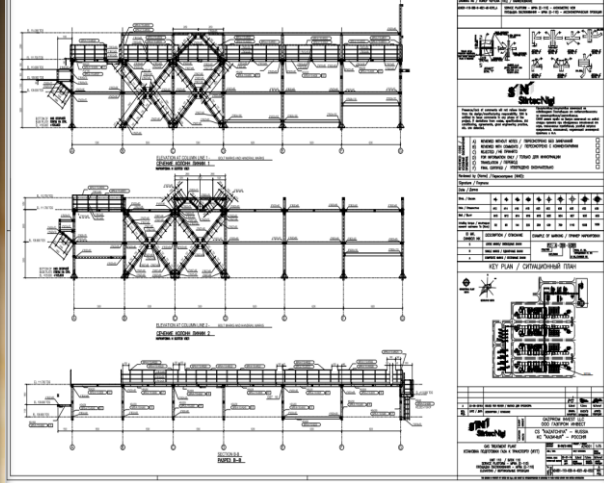
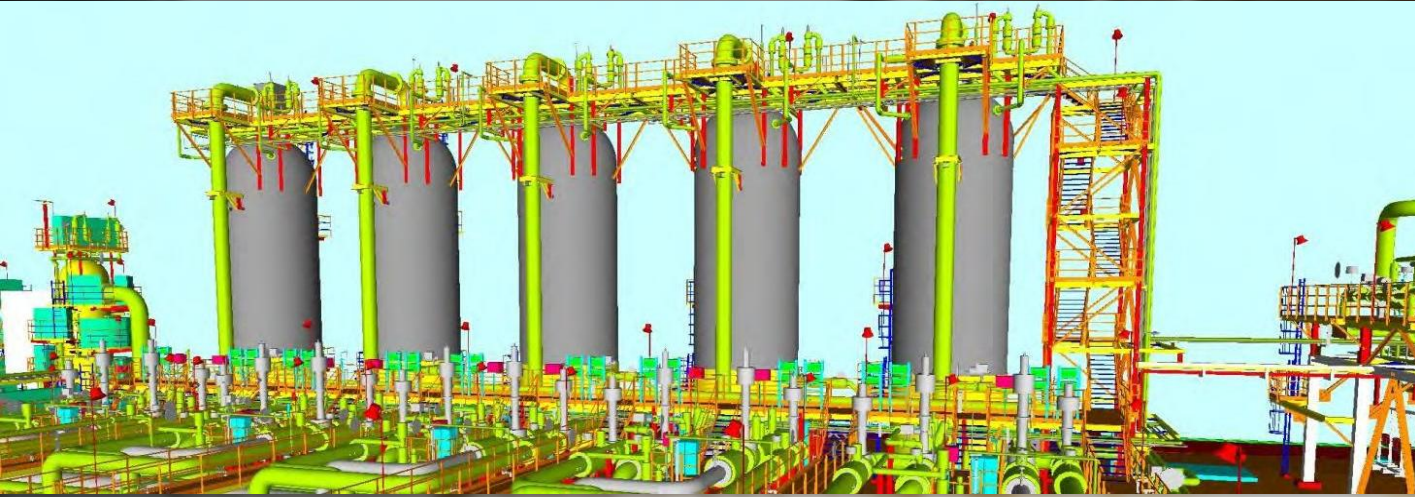
STRUCTURAL DESIGN – FEM ANALYSIS [BASIC & DETAIL]

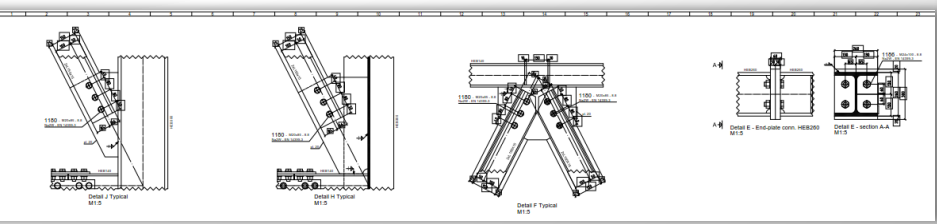
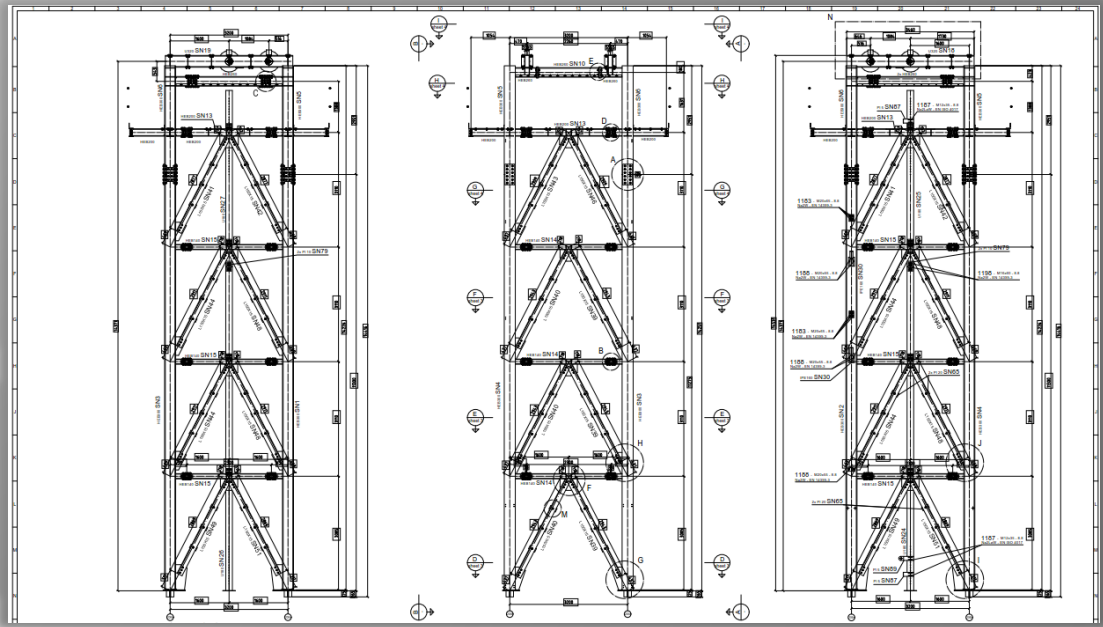
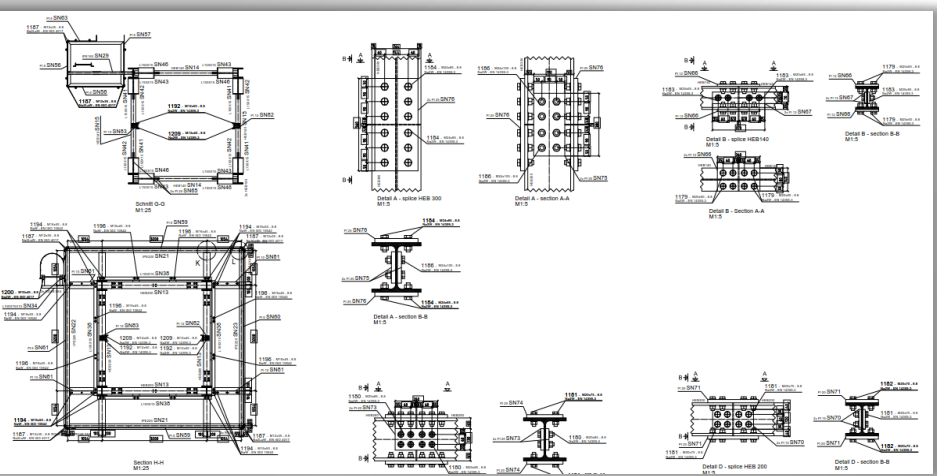
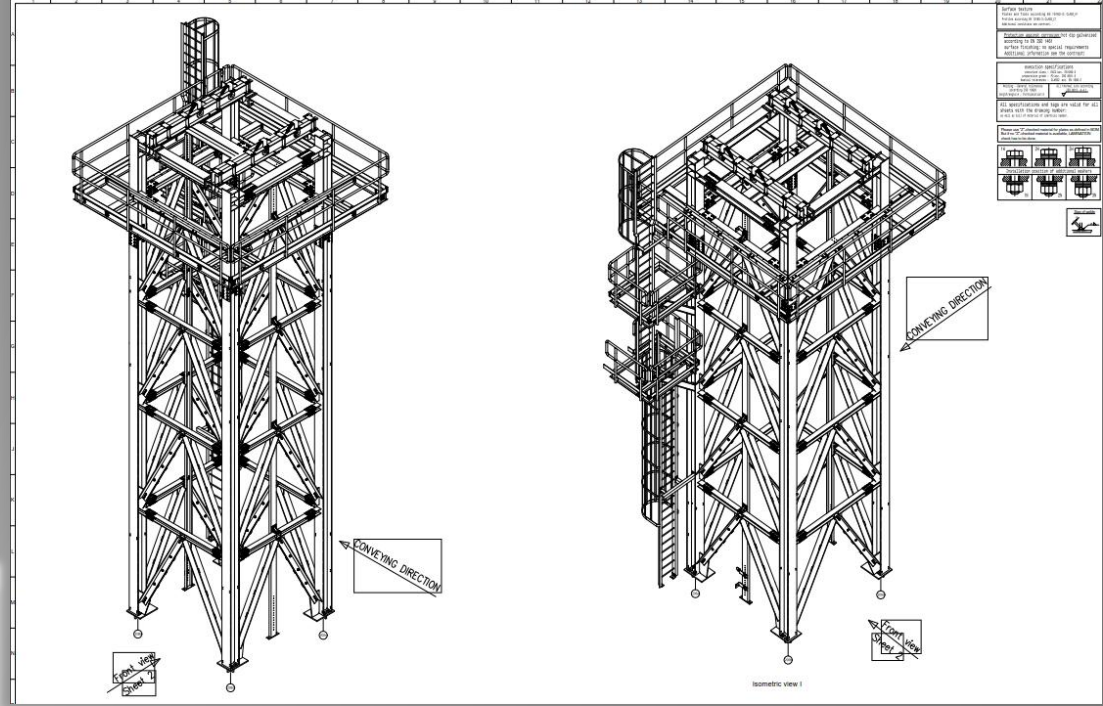
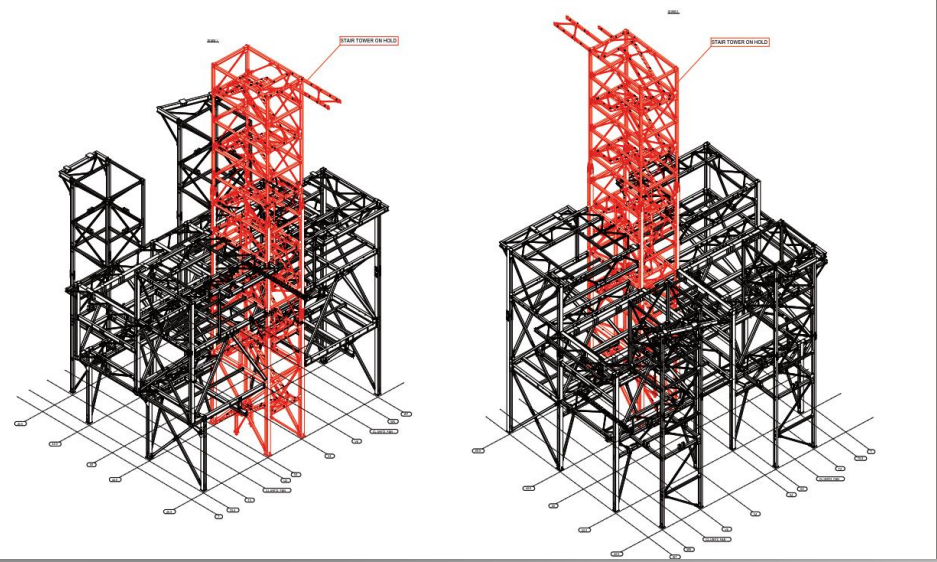


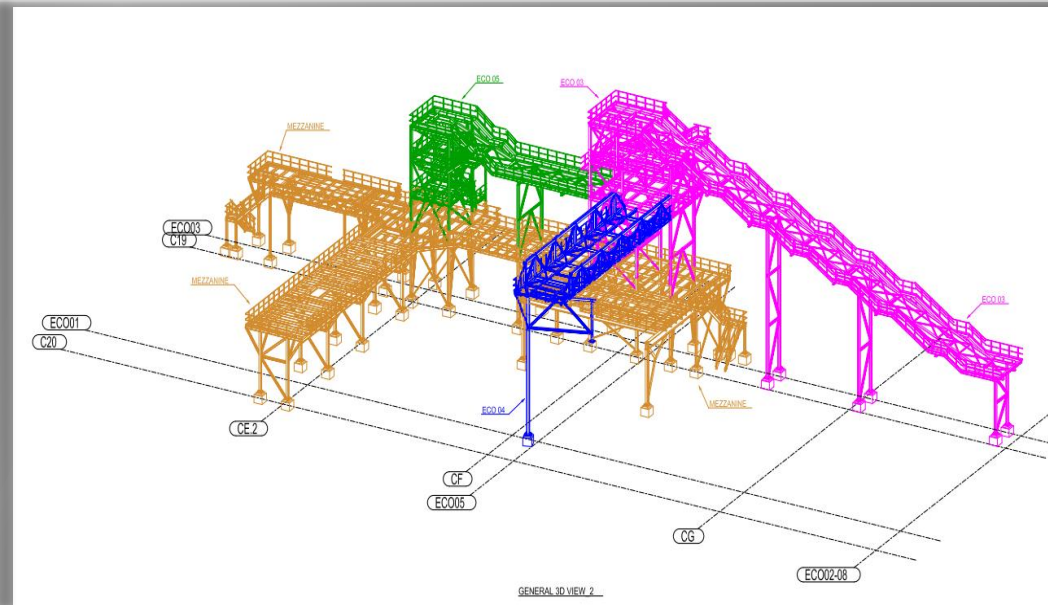
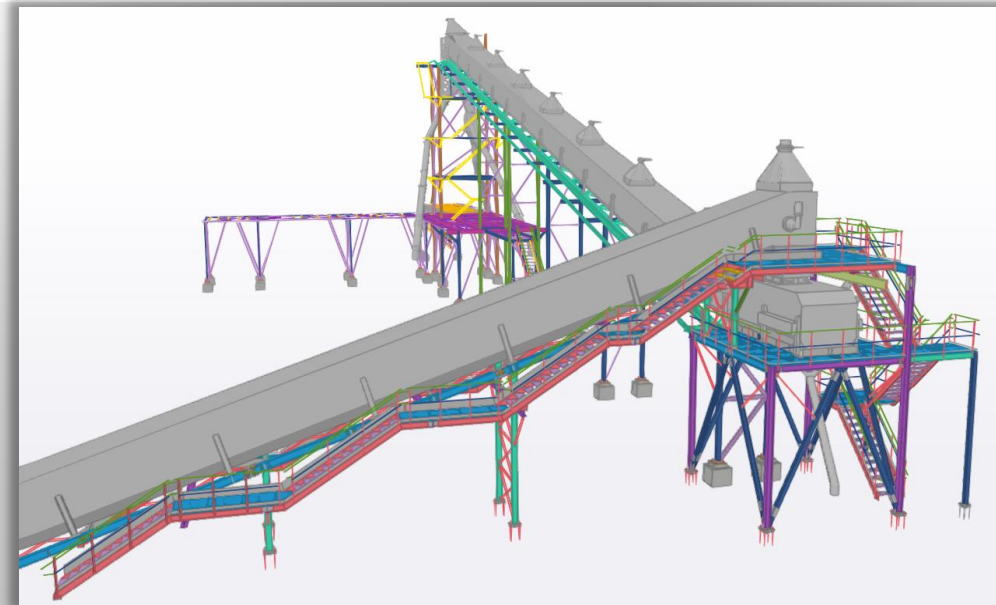




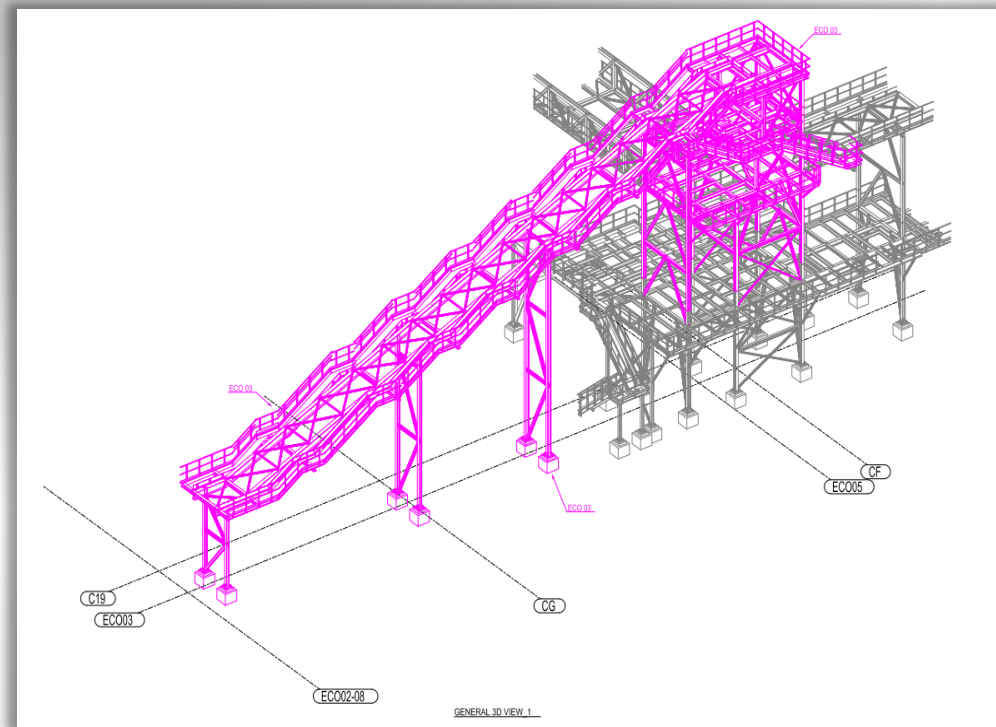




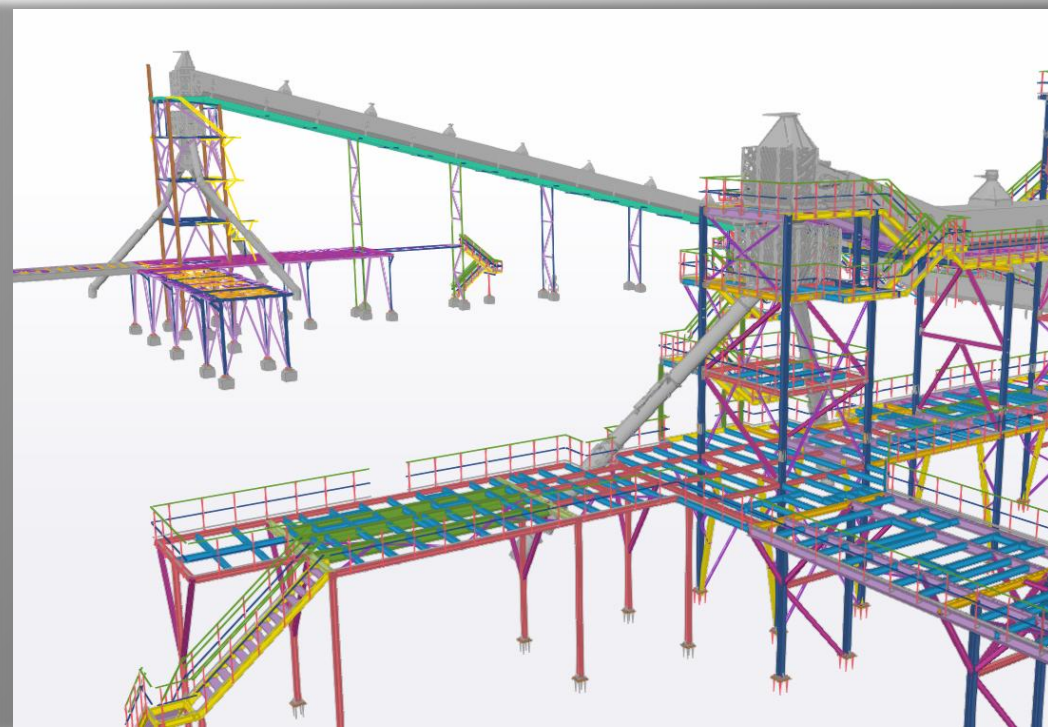


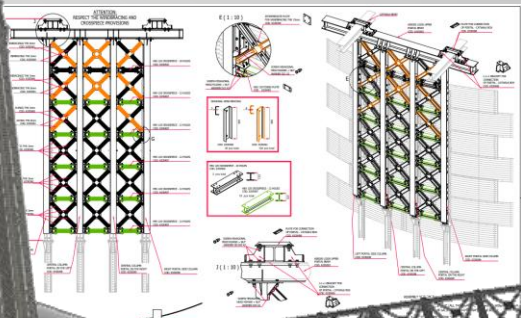
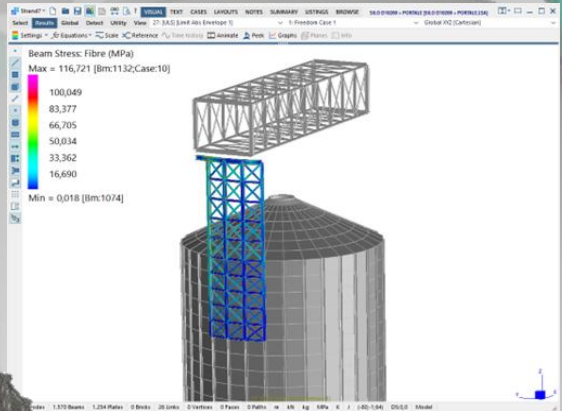
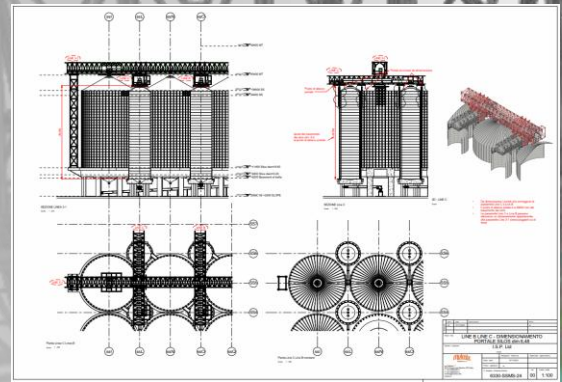
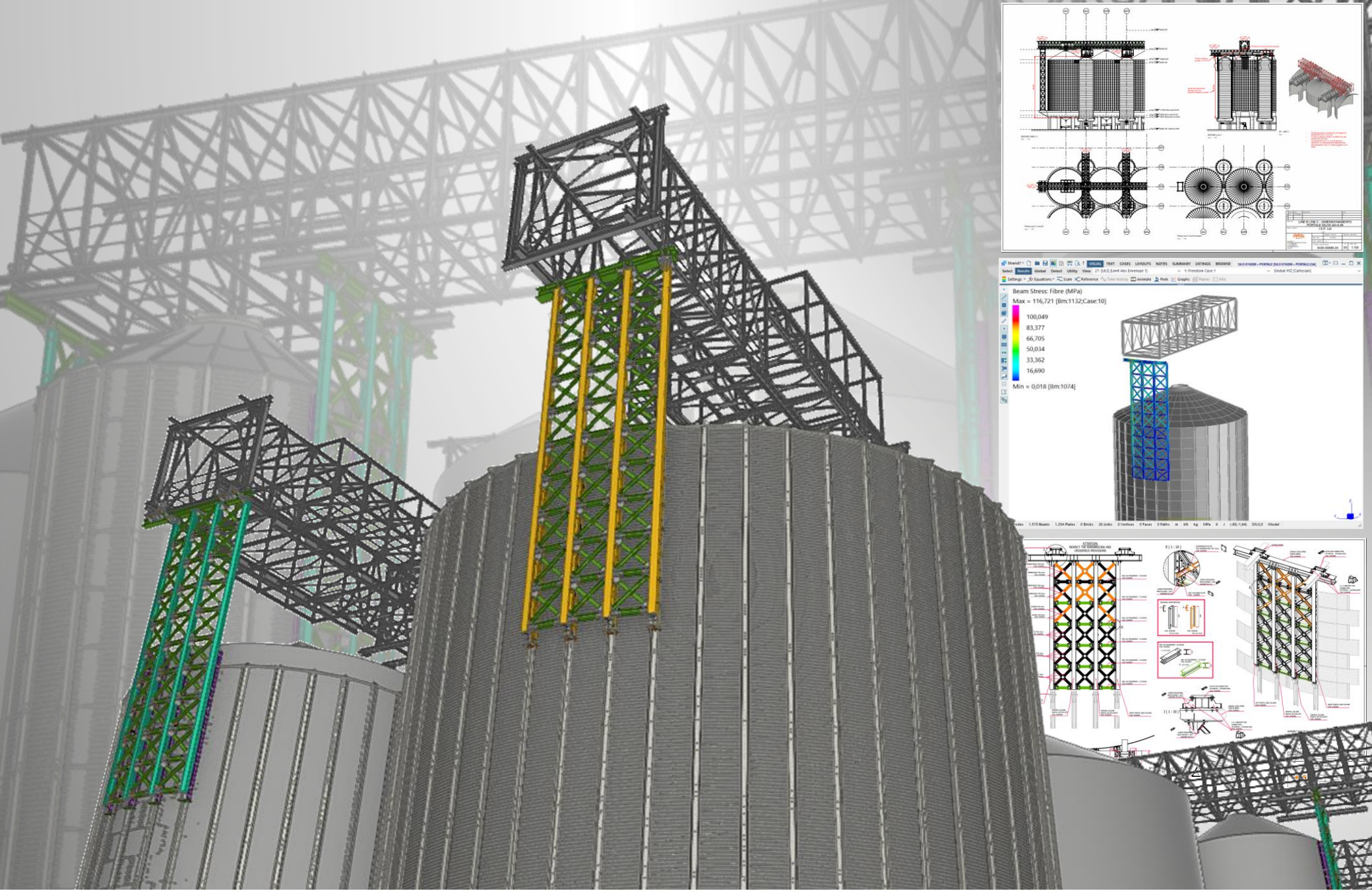


GENERAL 3D VIEW 2



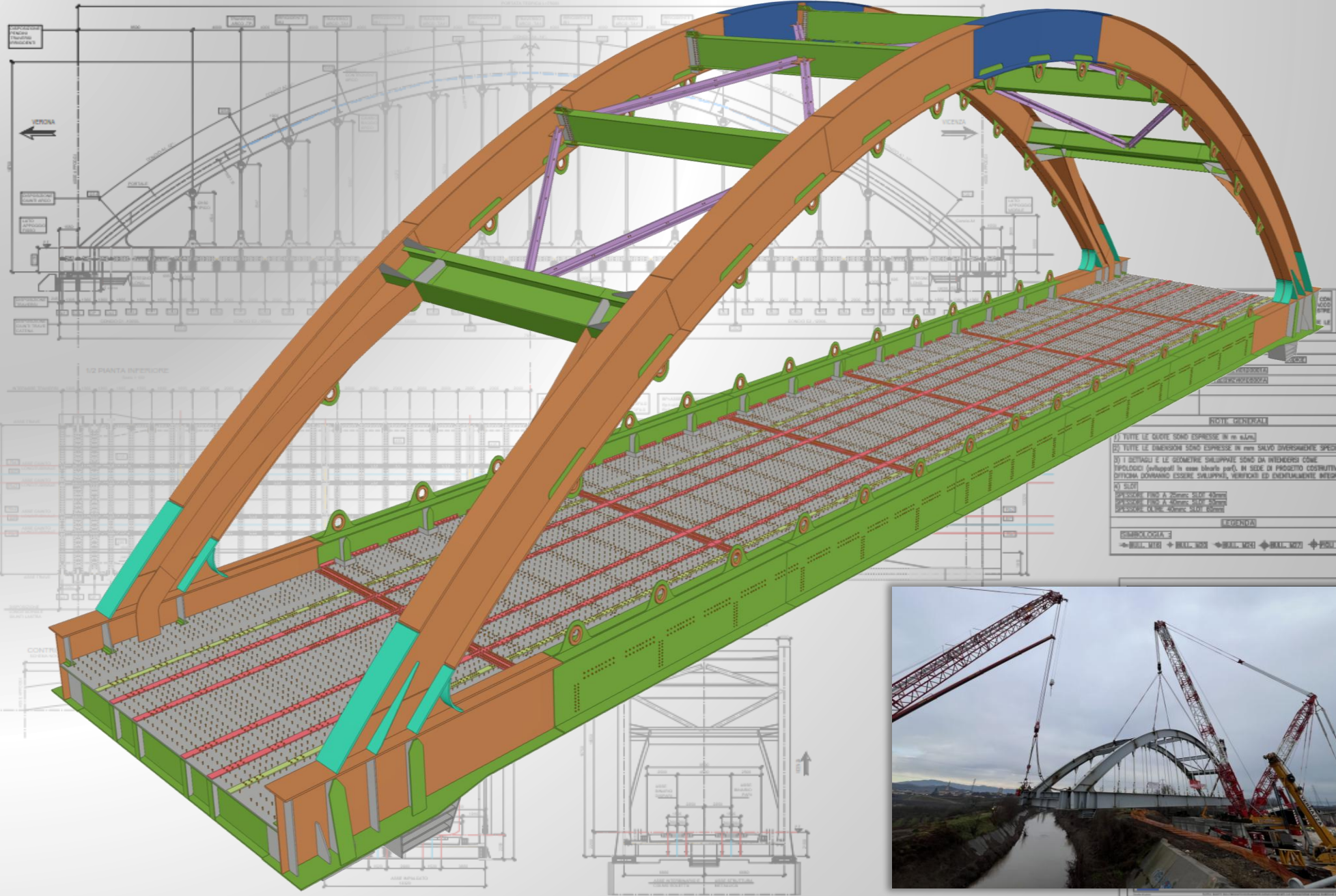
GENERAL 3D VIEW 1





SEZIONE LONGITUDINALE

IN FASCIA CENTRALE



NOTE GENERALI

1) TUTTE LE QUOTE SONO ESPRESSE IN m. e.s.l.m.

2) TUTTE LE DIMENSIONI SONO ESPRESSE IN mm SALVO DIVERSAMENTE SPECIFICATO

3) I DETTAGLI E LE GEOMETRIE SVALIPATE SONO DA INTERPRETARE COME TIPOLOGICI (sviluppati in caso contrario parti) IN SEDE DI PROGETTO COSTRUTTIVO DI DIFFICILE DEDUZIONE ESSERE SVALIPATE, VERIFICATE ED ENERGIAMENTE INTEGRATE

LEGENDA

◀ BALK_101 ▶ BALK_102 ▶ BALK_103 ▶ BALK_104 ▶ PILLI_F_32



